



USER MANUAL

TABLE OF CONTENTS

- Introduction..... 3
- What’s in the box?..... 4
- Getting started 5
- Startup..... 6
- Icon definitions and keys 7
- Ride screens 8
- Main Menu..... 9
 - Bike Profile 9
 - Pairing..... 10
 - Zero Offset..... 12
 - History 14
 - TotalValues..... 15
 - Settings 16
 - Sensors..... 16
 - Units..... 16
 - System..... 17
 - Data..... 18
 - User Profile..... 18
- Viewing data while riding 19
- Uploading files over WiFi..... 20
- Connecting to USB..... 23
- Updating Firmware..... 23
 - PC8 DeviceAgent..... 24
- Troubleshooting 25
- Copyright and Trademarks 25
- Statement of Compliance 26
- Warranty..... 27
- Safety instructions 27

INTRODUCTION

Welcome to the next generation of SRM Power! In your hand is the best training partner you will ever know. The PowerControl 8, developed by cyclists for cyclists, will push you harder, take you further, and enhance your training experience from this moment forward. The **PC8** continues SRM's legacy as cycling's superior training platform, honoring accuracy, precision, and durability designed for all riders. From the pro peloton to the Sunday group-ride, on the TT bike and the 29er...

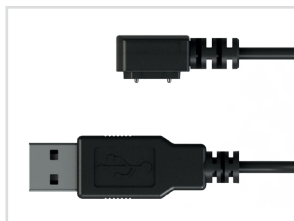
It's time to get more out of every ride with SRM!



WHAT'S IN THE BOX?



PowerControl 8



Download cable (14" or 102")



Handlebar clip

ADDITIONAL ACCESSORIES (COMPLETE BUNDLE):



Heartrate Belt SRM HR



USB Wall Charger (115/220V AC)

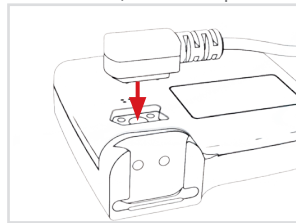


Speed Sensor

GETTING STARTED

Before using the **PowerControl 8 (PC8)** for the first time, some basic steps need to be completed. For more details on all available options, please refer to the respective chapters in this guide.

- Charge the PC8 to 100%: Connect the magnetic charging/download cable to the PC8, and a USB power source. This power source can be a computer, or any wall-mounted USB charger.
- Install the handlebar clip on the bike and clip on the PC8 until it locks in place.
- Turn on the PC8 with the **MODE** button and allow it to acquire satellites for GPS and to set the correct time (PC8 should remain stationary with a clear view to the sky) It may take longer to connect the first time or if large distances are covered between connections - see *Settings Menu for Time Zones/Day Light Savings* on page 17.
- Pair the PC8 with your sensors - see *Pairing* menu info on page 10.
- Go for a ride. If GPS is enabled and the PC8 is receiving data from a PowerMeter the ride will begin automatically. If no PowerMeter is present the PC8 will ask if you would like to begin a ride when movement is detected.
- When a ride is finished a short key press of **PRO + SET** will save and close the ride as well as give the option to upload via WIFI - see *Uploading files over WIFI* on pages 20-21.



NOTICE

If there is no valid GPS signal, no ANT+ Speed Sensor or PowerMeter connected the activity must be manually started by holding the **SET** (Start) key for 2sec. and confirm with **PRO** (Yes). Stop the manual recording by holding **SET** (Stop) key for 2sec.

When connected to a computer the PC8 will appear as a USB device or external drive, named SRM_PC8. On this drive, the **SRM/Activities** folder contains all ride activities as .fit file format. It can be copied or uploaded to the preferred software for analysis.

STARTUP

To activate the PC8 press the **MODE** key.
To put the PC8 manually back into standby mode hold the **MODE** key for 3 sec. while in the *Ride Screen*.

NOTICE

The PC8 display will completely shut off when the charge of battery reaches the lower limit. Please charge the PC8 to 100% before use.

The lock icon shows that the PC8 is securely locked and can only wake up by pushing and holding down the **MODE** key. If the PC8 Auto ON function is enabled and the PC8 goes in standby NO lock icon will be displayed. The PC8 will activate automatically when movement is detected or by pressing and holding the **MODE** key. Standby time can be configured with the SRM DeviceAgent software (default setting is 10min.).










Once the PC8 starts up there is the choice to start a *New Ride*, *Change the Bike Profile* or *Continue* the current ride. Starting a *New Ride* will close the last ride and reset all values to zero.

Use *Chg Prof* to select a different Bike Profile. For more information on Bike Profiles - see the “*Bike Profile*” section on page 9.



ICON DEFINITIONS AND KEYS

ICON DEFINITIONS

	Bike Profile	Currently active <u>Bike Profile</u>
	Interval	Currently active <u>interval</u> and count
	Battery	Status 0 - 100% or charging
	Sounds	Enabled
	ANT+™	Active
	Memory	Data is written to memory
	Wi-Fi	Enabled
	GPS	GPS signal quality and satellite fix
	Screen lock	PC8 is locked and will not automatically wake up with <u>PC8 Auto ON</u> function.



- 1 PRO:** *Short key press:* Interval / Zones / Actual Ride Overview
Long key press: Main Menu
- 2 MODE:** *Short key press:* Mostly used “Next”, see description above key
Long key press: Lock/unlock keys, awake/enter sleep mode
- 3 SET:** *Short key press:* Start/stop interval (in actual riding screen)
Long key press: Start/stop recording manually (in actual riding screen)

MODE + SET	<i>Short key press:</i>	<u>Zero Offset Menu</u>
PRO + SET	<i>Short key press:</i>	Save and close training file with option to upload via WIFI
PRO + MODE	<i>Short key press:</i>	Enter history
PRO + MODE + SET	<i>Long key press:</i>	Hard Reset PC8
PRO + MODE	<i>Long key press:</i>	Take screenshot of current screen

RIDE SCREENS

To cycle through the available screens, press the **MODE** key. The PC8 will automatically return to the 1st *Ride Screen* (Main) after a time period.

NOTICE

The automatic return feature can be disabled with the DeviceAgent software. To customize the screens individually refer to the DeviceAgent - see the “PC8 DeviceAgent” section on page 24.

SCREEN LAYOUTS

The PC8 has up to five fully customizable screens that can be viewed while riding. The default screen features a vertical zone bar which will adjust as you ride depending upon power being produced.

Each screen can be customized utilizing PC8 DeviceAgent on PC/MAC - see the “PC8 DeviceAgent” section on page 24.



RECORDING INTERVALS

To start an interval press the **SET** (Start) key. The screen now displays the *interval time* and the *current interval count*. All configured screens are available, and can be accessed by pressing the **MODE** key. To stop an interval press the **SET** (Stop) key. An overview screen will display the interval summary. The screen will disappear after some time and the ride screen will again be displayed. A marker will also be displayed in the file when downloaded.



ALTITUDE SCREEN

The altitude screen creates an altitude profile in real time as a file is created. The scaling of the screen, both horizontal (time) and vertical (elevation) will adjust as the ride progresses. The time scale of the graph is displayed in the center of the vertical column, along with the minimum and maximum altitude values.



MAIN MENU

To access the PC8 Main Menu press and hold the **PRO (Int/Zones)** key for 2 seconds. Navigate to the desired screen/option by using the **MODE (Next)** and **SET (Select)** keys. To return to the previous menu or return to the *Ride Screen* use the **PRO (Exit/Back)** key.



BIKE PROFILE

In the *Main Menu* screen press **SET (Select)** to enter *Bike Profile* screen. Creating profiles for different bikes with different ANT+™ sensors, such as PowerMeters or speed sensors, will eliminate the need to re-pair the sensors on the respective bike. After a sensor has been paired it is associated with the profile under which it was paired. Switching profiles will automatically remember the devices paired in that profile. There are four bike profiles available to choose from. Each profile is identified by name which can be customized using the SRM PC8 DeviceAgent.

Pressing **MODE (Next)** will browse through the available profiles. Press **SET (Change)** to use the currently selected profile.



PAIRING

To pair an ANT+™ device in the current *Bike Profile*, select *Pairing* from the *Main Menu*.

NOTICE

The SRM PC8 **only** supports ANT+™ sensors
- older ANT™ sensors and Bluetooth® smart sensors are not supported.

PAIRING ANT+™ POWERMETER SENSOR

Select *PowerMeter* with **SET** (Select) key. Press **SET** (Search) again to search for an available sensor. The *Search* field will display a status bar while the PC8 searches for the PowerMeter.

NOTICE

The PowerMeter must be turned on to be recognized by the PC8. Please refer to the device manual for further information.

If a PowerMeter has been found, the *Search* field will show *CONNECTED* and display the serial number. Pedal the PowerMeter for additional device status information (e.g. slope, rpm). If no connection can be established - see the “Troubleshooting” section on page 25.

After a PowerMeter has been paired with the PC8, it can be calibrated/set zero offset by pressing **MODE** (Zero Offset).



PAIRING ANT+™ SPEED SENSOR

To pair an ANT+™ Speed Sensor select *Speed Sensor* with **SET** (Select) key in the *Pairing* menu. Press **SET** (Search) again to search for an available sensor.

NOTICE

The SRM PC8 supports ANT+™ speed and combined speed/cadence sensors. A speed sensor must be turned on to be recognized by the PC8. Please refer to the device manual for further information. If no connection can be established - see the "Troubleshooting" section on page 25.

After a Speed Sensor has been paired with the PC8, the wheel size can be set by pressing **MODE** (Wheel Size).

PAIRING ANT+™ HEARTRATE SENSOR

To pair an ANT+™ Heartrate Sensor select *Heartrate* with **SET** (Select) key in the *Pairing* menu. Press **SET** (Search) again to search for an available sensor.

NOTICE

Heartrate Sensors do not belong to a specific bike profile and therefore only need to get paired once. A Heartrate Sensor must be turned on to be recognized by the PC8. Please refer to the device manual for further information. If no connection can be established - see the "Troubleshooting" section on page 25.

ANT SENSOR INFORMATION

This screen displays the specific sensor information such as manufacturer, serial number and battery levels for the paired ANT+ PowerMeter, Speed Sensor and Heartrate belt. Press **MODE** (Next) to scroll through the sensor info screens.



ZERO OFFSET

SRM POWERMETER

To set the zero offset of the SRM PowerMeter paired in the current profile, select *Zero Offset* from the *Main Menu*.

NOTICE

Press **MODE** and **SET** in the main *Ride Screen* to access the *Zero Offset* screen directly.

This screen displays the current Zero Offset received from the PowerMeter (left) and the Stored Offset (right) which is used to calculate the Power. Press **SET** (Set) to store the received Zero Offset. Both numbers should now have the same value.

Auto-Zero functionality can be turned ON/OFF by selecting *AUTO-ZERO* and pressing the **SET** (Change) key. The PC8 factory setting for *Auto-Zero* is ON. The PowerMeter and PowerControl will sync to update a new Zero Offset value during your ride to insure the utmost accuracy of measurement.

NOTICE

The Zero Offset must be set with no torque on the cranks. If the current Zero Offset value is zero, the PowerMeter is not transmitting data. Please refer to the SRM PowerMeter manual for further troubleshooting.

If the *Slope* was manually modified the calibration screen will show the letter **M** before the slope value.



M 15.1Hz/Nm

OTHER THIRD PARTY ANT+™ POWERMETERS

To calibrate other third party ANT+™ PowerMeter paired in the current profile, select *Zero Offset* from the *Main Menu*.

NOTICE

Press **MODE** and **SET** in the main *Ride Screen* to access the *Zero Offset* screen directly.

Press **SET** (Set) to send a calibration request to the PowerMeter. The SRM PC8 will display if the calibration process failed or succeeded.

NOTICE

Calibrate the PowerMeter with no torque applied. Make sure the PowerMeter is turned on and transmitting data. Please refer to the device manual for further troubleshooting.

Auto-Zero functionality can be turned ON/OFF by selecting *AUTO-ZERO* and pressing the **SET** (Change) key.

Some PowerMeters require crank length to properly calculate power, this can be entered here. See device manual for further information.

NOTICE

The Auto-Zero feature is only supported for sensors that self-monitor zero offset. Please refer to the device manual for further information. All other devices will show **N/A** (not available) status.



HISTORY

To view history of the last twenty eight recorded rides and your total ride values on the PC8, select *History* from the *Main Menu*.

RIDES

Select *Rides* and press **SET** (Select) to enter the list of all rides. Press **MODE** (Next) to cycle through them. To view the details of a ride press **SET** (Select). There are three pages with totals, average and maximum values.



SCREENSHOTS

Select *Screenshots* and press **SET** (Select) to enter the list of all screenshots.



UPLOAD AND DELETE FILES

From both the *Rides* and *Screenshots* screens you can send files via WiFi. Press **SET**(Select) to cycle to the Upload and Delete screen where you can choose to Upload or Delete the file - *see the Upload Files Over WiFi section on page 20 for more information on setting up WiFi connection*.

After a file has been uploaded successfully the upload symbol will appear next to the file in the list.

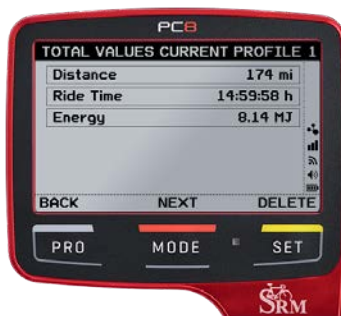


TOTAL VALUES

Select *Total Values* to view a total of distance, ride time and energy for all rides done with the PC8.



Press **MODE** (Next) to switch to the *Total Values of the current bike profile* in use. Resetting the values is done by pressing **SET** (Delete) key and confirming by selecting YES/NO.



SETTINGS

To view and modify the Settings on the PC8, select *Settings* from the *Main Menu*.

SENSORS

To view and modify sensor settings, select *Sensors* from the *Settings* Menu. Makes changes to the desired sensors with the **SET** (Change) key. When leaving the menu with the **PRO** (Back) key the settings are automatically saved.

- *Cal. Altitude Man ON* allows manual adjustment of baseline altitude.
- *Wheel Size* adjustment allows for changes in different wheel/tire sizes to insure accurate speed and distance calculations when setup for *Speed via ANT+*.
- *GPS* can be turned *OFF* or *ON*. Note that battery life will be decreased with *GPS ON*.
- *Speed via* changes how speed is obtained. The PC8 can calculate speed via *GPS* or with an *ANT+* speed sensor.
- *ANT High Sens.* Set to *ON* if experiencing occasional data drops. Note that battery life may be decreased.



UNITS

To view and modify units, select *Units* from the *Settings* Menu. Change to the desired metrics *Metric* or *Imperial* with the **SET** (Change) key. When leaving the menu with the **PRO** (Back) key the settings are automatically stored.



SYSTEM

To view and modify system settings, select *System* from the *Settings* Menu.

- *Signal Sounds* allows for PC8 sounds to be turned on or off.
- *Backlight* default setting is *OFF*. *Auto* will switch on the backlight based on light intensity. For energy saving the backlight will switch off after some time when there is no movement.
- *Time Zone* allows for adjustment in UTC time zone based on location. More information on determining proper UTC time can be found here: <http://www.timeanddate.com/worldclock/timezone/utc>
- *Daylight Savings* is used to switch daylight savings time *OFF* or *ON* based on location and time of year.
- *PC8 Auto ON* enabled will turn on the PC8 automatically when movement is detected. This function will not work if PC8 is locked.
- *Screen Color* toggles screen between black and white background.
- *Screen Return* set to *AUTO* will automatically return to main ride screen after a set time (time can be adjusted in PC8 DeviceAgent).
- *Date/Time* allows for manual adjustments to date and time.
- *Scan Disc* allows for testing and repairing the internal memory. Run *Scan Disc* if your computer displays an error when PC8 is connected.
- *Info* displays PC8 firmware version, current battery voltage and serial number.



DATA

To view and modify data settings, select *Data* from the *Settings* Menu.

- *Power, Cad., or torque with zero*: Default setting is ON - zero values from cadence and power are used to calculate average power, cadence and torque. If setting is set to *OFF* only cadence and power above zero are used for average calculations.
- *Auto FTP* will automatically estimate your FTP (Functional Threshold Power) based on your ride history.
- *FTP* Displays your currently stored FTP. Value is based on calculations of ride history when *Auto FTP* is ON or can be set manually.



USER PROFILE

To view and modify user profile settings, select *User Profile* from the *Settings* Menu.

User Profile settings can be modified except the name and age, these must be altered in the PC8 DeviceAgent. Install and connect to the DeviceAgent to modify all data via computer - see the "PC8 DeviceAgent" section on page 24.



Weight can be set manually or measured with an ANT+™ weight scale. The PC8 will connect to a weight scale and receive the weight and other information automatically. To apply the new values press the **SET** (Set) key.

ANT+™ weight scales can be purchased as an after market product. See <http://www.thisisant.com/directory>



VIEWING DATA WHILE RIDING

REVIEWING INTERVALS

Intervals recorded during the current ride can be reviewed by pressing **PRO** (Int/Zones). Press the **MODE** (Next) key to reverse cycle through all available intervals starting with the most recent one.



VIEWING TRAINING ZONES

To view the *Training Zones* press the **SET** (Zones) key in the *Interval Review* screen. There are up to seven training zones configurable based on power or heartrate. To browse to the next higher one press the **MODE** (Next) key.

NOTICE

Training zones can only be configured in the DeviceAgent software.



VIEWING ACTUAL RIDE OVERVIEW

To view the *Ride Overview* of the current ride press the **SET** (Ride) key in the *Training Zones* screen. To browse through the total, average and maximum values press the **MODE** (Next) key. Press the **SET** (Interval) key to return back to the *Interval Review* screen. Leave the menu by pressing the **PRO** (Exit) key.



CONFIGURE WIFI CONNECTION

WIFI configuration can be done through the PC8 itself utilizing WPS connectivity or through PC8 DeviceAgent on a PC/MAC.

NOTICE

WPS (WIFI Protected Setup) allows for direct connections between the router and PC8. This allows for easier WIFI setup without the need to manually enter credentials.

Check the router specifications to confirm compatibility. If the router does not support WPS connectivity, WIFI setup must be completed through PC8 DeviceAgent.

NOTICE

PC8 is not compatible with WIFI networks which require additional backend authentication (i.e. many hotels and airports).

SETUP WIFI CONNECTIONS ON PC8

In the *Main Menu* screen navigate to the *Settings* menu and then to the *Connectivity* menu. Select *WIFI* to access WIFI options.

With *WIFI ON* select *Connect With WPS* and highlight an empty slot for the new connection. Press **SET** (START) and follow the on screen prompts to setup a new connection.

Select *Gateways* to manage uploads to email, apps and 3rd party programs.

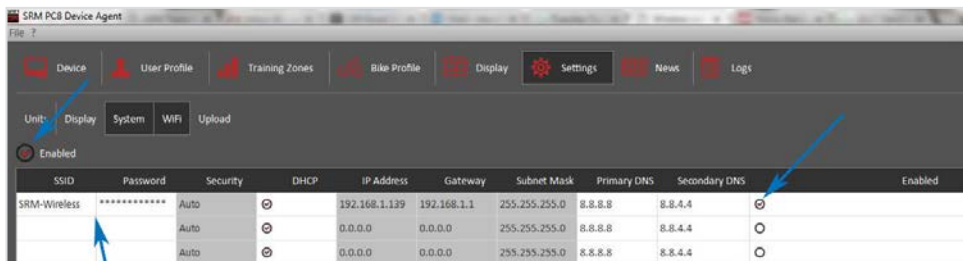
NOTICE

The configuration of *Gateway* uploads must first be completed through the PC8 DeviceAgent.



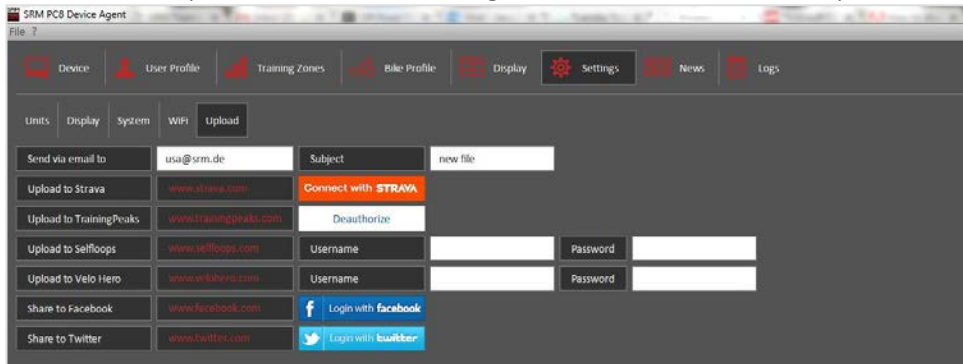
SETUP WIFI CONNECTIONS WITH PC8 DEVICEAGENT

- Connect PC8 to the computer - see the *PC8 DeviceAgent* section on page 23 for more information on downloading the latest version.
- Navigate to the *Settings* tab and select *WIFI*
- Enable WIFI mode
- Select an empty wireless slot and input network credentials (SSID and Password)
- Enable selected WIFI slot



CONFIGURING GATEWAY UPLOADS

- Navigate to the *Settings* tab and select *Upload*
- To enable a desired Gateway enter the necessary information, select the *Connect with* or *Login with* button and follow the onscreen instructions to authorize the gateway.
- Once a Gateway has been enabled it can be managed from the PC8 itself from the *Gateways* screen.



UPLOADING FILES OVER WIFI

SENDING FILES FROM PC8 AT END OF RIDE

- To manually end a ride and upload the file short press **PRO** + **SET**, a notification will ask “DO YOU WANT TO RESET CURRENT RIDE?” Press **PRO** (YES).
- A notification will then ask “DO YOU WANT TO UPLOAD CURRENT RIDE?” Press **PRO** (YES) to upload file.

SENDING FILES FROM PC8 HISTORY

Past rides can be found in the *History* screen which is accessed from the *Main Menu*.

- Select the ride to be uploaded
- Press **SET** (Select) to cycle to the Upload and Delete screen where you can choose to Upload or Delete the file.

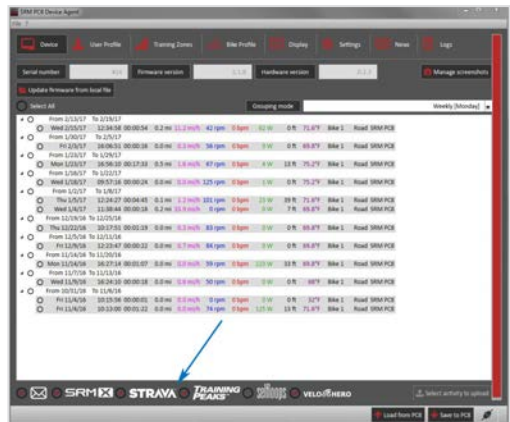


After a file has been uploaded successfully the upload symbol will appear next to the file in the list.



SENDING FILES FROM PC8 DEVICEAGENT

- After the desired Gateways have been setup they will appear at the bottom of the Device files page.
- Enable the Gateways you would like to upload to by checking the box near the software.
- Select the activity to upload and press the *Upload Activities* button.



CONNECTING TO USB

Connect the PC8 via USB download cable to your PC or MAC. The PC8 will appear as a USB mass storage device named SRM_PC8. Activities can be found in the folder /SRM/Activities.

⚠ CAUTION

Never delete any folder or format the SRM_PC8 device to prevent data loss.



UPDATING FIRMWARE

SRM will continue to improve the PC8 by providing firmware updates which can be updated manually or through the PC8 DeviceAgent.

How to update the firmware through PC8 DeviceAgent:

- Insure you have the latest PC8 DeviceAgent - see the *PC8 DeviceAgent* section on page 24 for more info.
- Connect PC8 to the computer and follow on screen prompts from the PC8 DeviceAgent.

How to update the firmware manually:

- Download new firmware to computer from: <http://www.srm.de/products/software/>
- Connect PC8 to computer via USB cable
- Copy firmware file to the folder /SRM/Firmware
- Disconnect PC8 from your computer, follow on-screen prompts - firmware installs and PC8 restarts automatically.



PC8 DEVICEAGENT



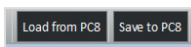
To configure the PC8 is accompanied by the PC8 DeviceAgent software. It provides an intuitive user interface that is designed to make PC8 configuration tasks an easy and effortless experience.

The PC8 DeviceAgent is supported on Microsoft® Windows and Mac OS X® operating systems. To download the latest version and see the minimum system requirements check our webpage at <http://www.srm.de/products/software>.

After downloading and installing the application, connect the PC8 to a USB port on the computer using the charging/download cable. Open the DeviceAgent software - a connection icon in the status bar will indicate that communication with the PC8 is established.

The *PC8 DeviceAgent* will load and display the current settings of your PC8 automatically. The current settings can always be re-loaded by pressing the *Load from PC8* key in the status bar. **After configuring the PC8 using the PC8 DeviceAgent, press Save to PC8 to save any changes that were made to the PC8.** Disconnect the PC8 from USB to load the new settings automatically.

For more information about the PC8 DeviceAgent visit <http://www.srm.de/support/manuals-documents/> or Select *Help/Manual* within the DeviceAgent software.



TROUBLESHOOTING

MY PC8 DOES NOT FIND MY ANT+™ DEVICE

Make sure the sensor you are trying to pair with the PC8 is within range (max 12 feet), and turned on. Please refer to the manual of the respective sensor for details on how to turn a sensor on. If the sensor has been in use previously (e.g. is not new) consider replacing the battery.

MY WINDOWS/MAC COMPUTER DOES NOT RECOGNIZE MY PC8

Verify that the PC8 is turned on and charged. If the PC8 screen is blank, or shows <10% charging level, allow for recharging. If your computer still does not detect your PC8, disconnect the PC8 cable and connect another USB mass storage device, such as a USB stick, on the same port. If the USB mass storage device is found, do a Hard Reset of the PC8 by pressing and holding the **PRO**, **MODE** and **SET** keys simultaneously for three seconds. Once the PC8 has re-started, re-connect to the computer to test connection.

MY PC8 DOES NOT SHOW THE SETTINGS CONFIGURED WITH THE PC8 DeviceAgent

Changes made with the SRM PC8 DeviceAgent are not written to the PC8 automatically. To transfer any settings change, click the *Save to PC8* button in the DeviceAgent's status bar.

MY PC8 CANNOT ACQUIRE A GPS CONNECTION

If the PC8 does not acquire a GPS connection after 10minutes, with a clear view at the sky you can reset the GPS module. To reset the GPS module in your PC8, ensure the PC8 is on and awake. Perform a long press of the **PRO** button to get to the Main Menu screen. In the Main Menu, long press the **SET** button to get to the Sensor Info screen. In the Sensor Info screen, long press the **SET** button to reset the GPS module. If you have the sound active you will hear a beep when resetting the GPS module and you will see the GPS icon begin to flash on the right hand side of the screen.

COPYRIGHT AND TRADEMARKS

ANT+™ is a trademark of the Garmin Ltd. The Bluetooth® wordmark and logos are owned by the Bluetooth SIG, Inc. and any use of such marks by SRM GmbH is under license. Wi-Fi® is a registered trademark of the Wi-Fi Alliance Corporation. Windows® is a registered trademark of Microsoft Corporation. Mac® is registered trademark of the Apple Computer Inc. Other trademarks and trade names are those of their respective owners. This product is ANT+™ registered. View all compatible products at www.thisisant.com/directory.



STATEMENT OF COMPLIANCE

This device complies with Part 15 of the Federal Communications Commission (FCC) Rules. Operation is subject to the following two conditions:

1. This device may not cause harmful interference.
2. This device must accept any interference received, including interference that may cause undesired operation.

Caution: Changes or modifications to this unit not expressly approved by the party responsible for compliance (SRM) could void the user's authority to operate this equipment.

This equipment has been tested and found to comply with the limits for a Class B digital device, pursuant to Part 15 of the FCC Rules. These limits are designed to provide reasonable protection against harmful interference in residential installation. This equipment generates, uses and can radiate radio frequency energy and, if not installed and used in accordance with the manufacturer's instructions, may cause interference harmful to radio communications. There is no guarantee, however, that interference will not occur in a particular installation. If this equipment does cause harmful interference to radio or television reception, which can be determined by turning the equipment off and on, the user is encouraged to try to correct the interference by one or more of the following measures:

1. Reorient or relocate the receiving antenna.
2. Increase the separation between the equipment and receiver.
3. Connect the equipment to an outlet on a circuit different from that to which the receiver is connected.
4. Consult the dealer or an experienced radio or TV technician for help.

Any questions regarding the information contained in the Statement of Compliance should be directed to:

SRM Service Center, Inc. d/b/a SRM USA
720 W. Monument Street
Colorado Springs, CO 80904
(719) 266-4127

WARRANTY

GLOBAL TWO YEAR WARRANTY

SRM PowerControl & SRM accessories: are warranted to be free from defects in materials or workmanship for two years from the date of purchase. Within this period, SRM will, at its option, repair or replace any components that fail in normal use. Such repairs or replacement will be made at no charge to the customer for parts or labor, provided that the customer shall be responsible for any necessary transportation cost. This warranty does not apply to: (I) cosmetic damage, such as scratches, nicks, and dents; (II) damage caused by improper bike fitment; (III) damage caused by improper installation by an unauthorized SRM dealer; (IV) damage caused by a crash, accident, abuse, misuse, fire, or other external causes; (V) damage caused by service performed by anyone who is not an authorized SRM service representative; or (VI) damage to a product that has been modified or altered without the written permission of SRM. Additionally, SRM reserves the right to refuse warranty claims against products or services that it deems fraudulent. Attempting to service or open the PowerControl product will void the warranty! Each SRM product has a tamper seal to prevent unauthorized service. For all warranty issues please call or email the associated SRM Service Center.

IMPORTANT SAFETY INSTRUCTIONS

⚠ CAUTION



Battery Warnings

You must read these safety instructions and warnings before using or charging your device. If these guidelines are not followed, the internal lithium-polymer battery may experience a shortened life span or may present a risk of damage to the PC8, fire, chemical burn, electrolyte leak and/or injury. Lithium-polymer batteries are volatile. Do not disassemble, modify, puncture or damage the device. Do not expose the device to fire, explosion or other hazard. Do not remove or attempt to remove the non-user-replaceable battery.



Magnetic field

Magnets in the PC8 and download cable produce a far-reaching, strong magnetic field. They could damage TVs and laptops, computer hard drives, credit and ATM cards, data storage media, mechanical watches, hearing aids and speakers. Keep both away from devices and objects that could be damaged by strong magnetic fields.



Pacemaker

Magnets in the PC8 and download cable could affect the functioning of pacemakers and implanted heart defibrillators. A pacemaker could switch into test mode and cause illness. A heart defibrillator may stop working.



SRM INTERNATIONAL

SRM GmbH

Rudolf-Schulten-Str. 6

52428 Jülich

Germany

Tel: +49 2461 691230

info@srm.de

SRM ITALIA

Viale Carlo del Prete, 347 F

55100 Lucca (LU)

Italia

Tel: +39 0583 332036

italia@srm.de

SRM USA

720 W. Monument St.

Colorado Springs, CO 80904

USA

Phone: 719.266.4127

usa@srm.de

SRM OCEANIA

1 Laurel Lane

Linwood, Christchurch 8011

New Zealand

Phone: +64 (3) 355 9467

oceania@srm.de